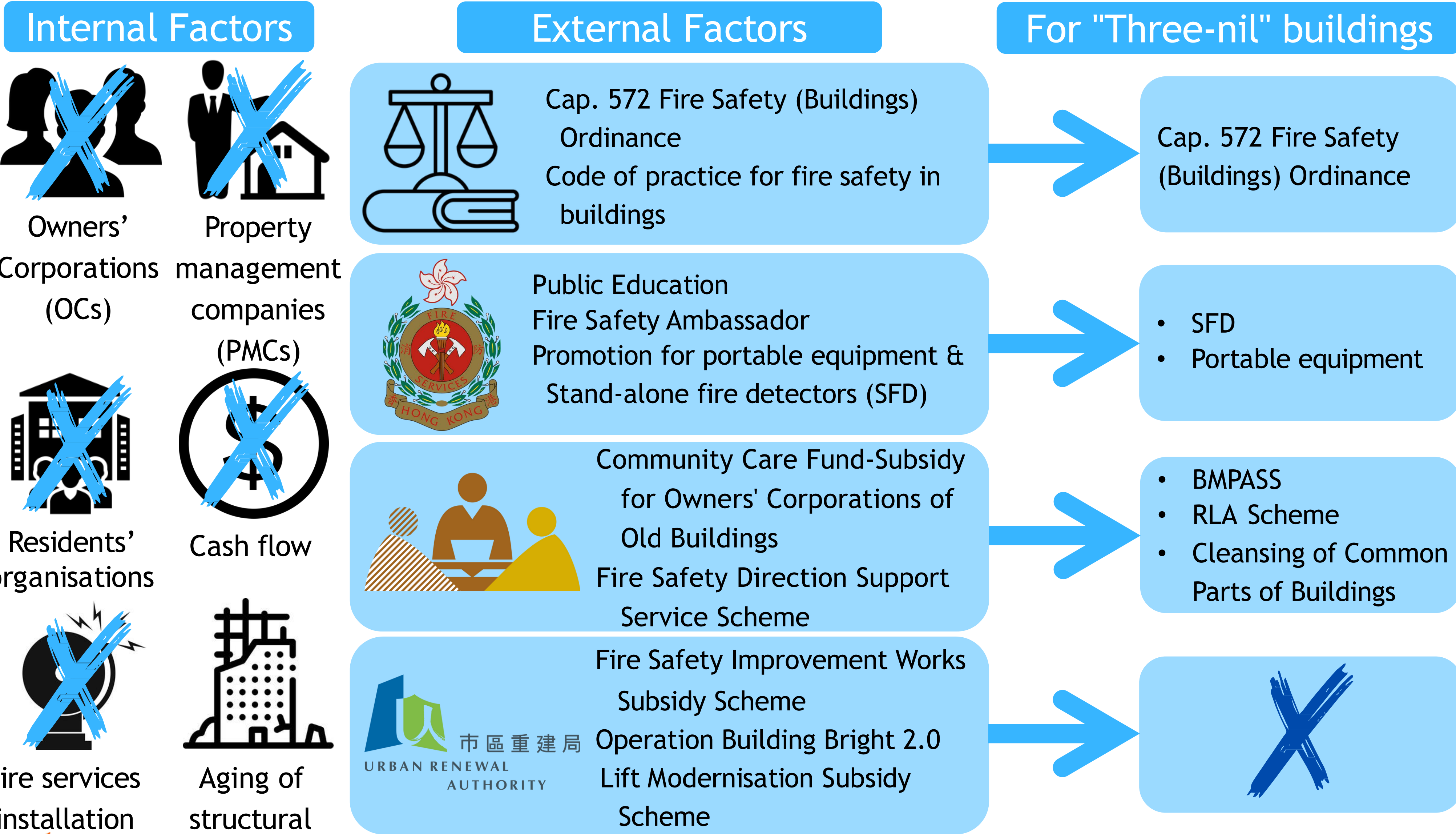


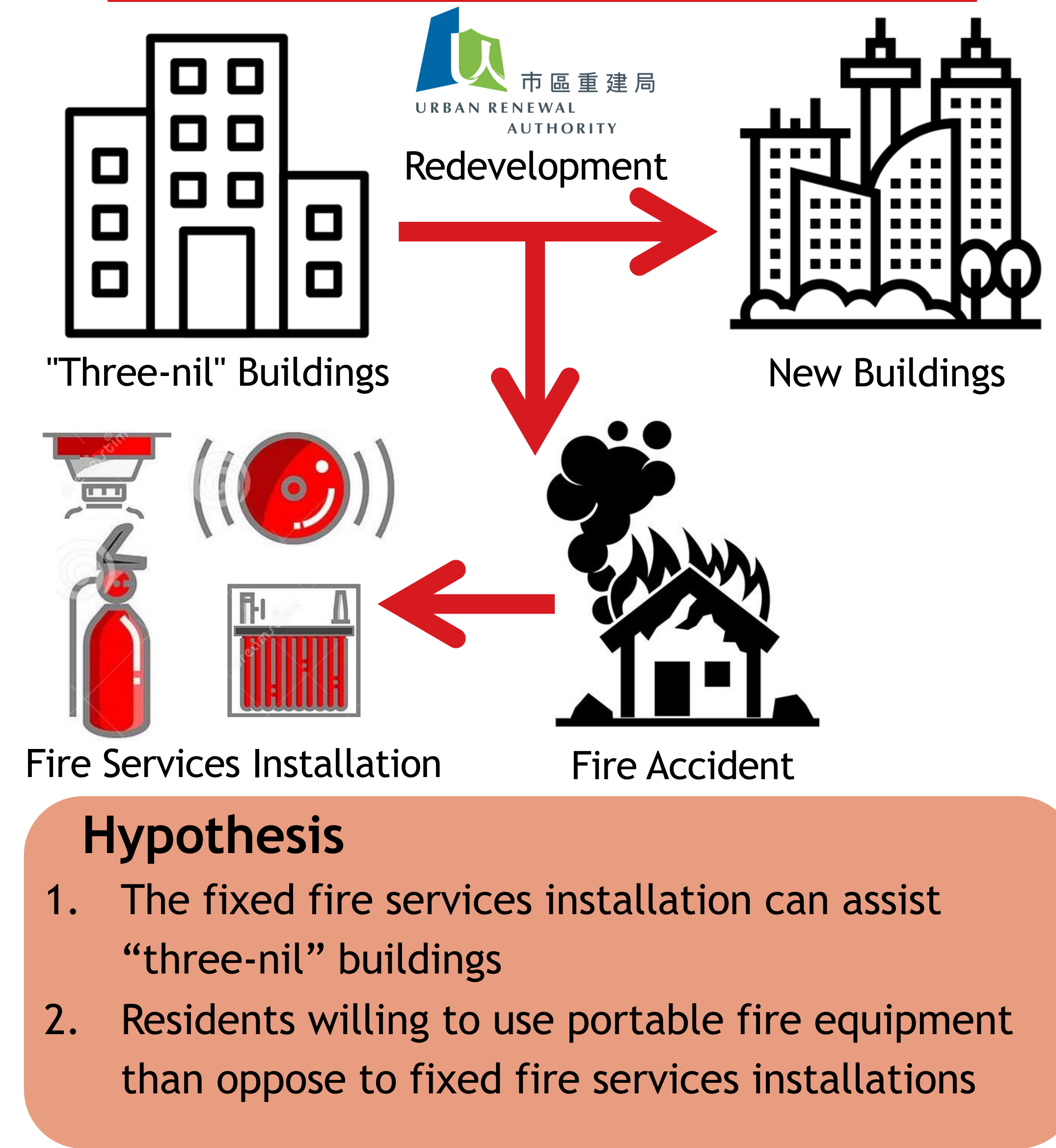
# Applicability of Fire Services Installation in "Three-nil" Buildings

Miss IP Wai Lam, BSc (Hons) in Surveying, Faculty of Design and Environment  
Supervisor: Sr Prof HO Chi Wing Daniel, Associate Dean

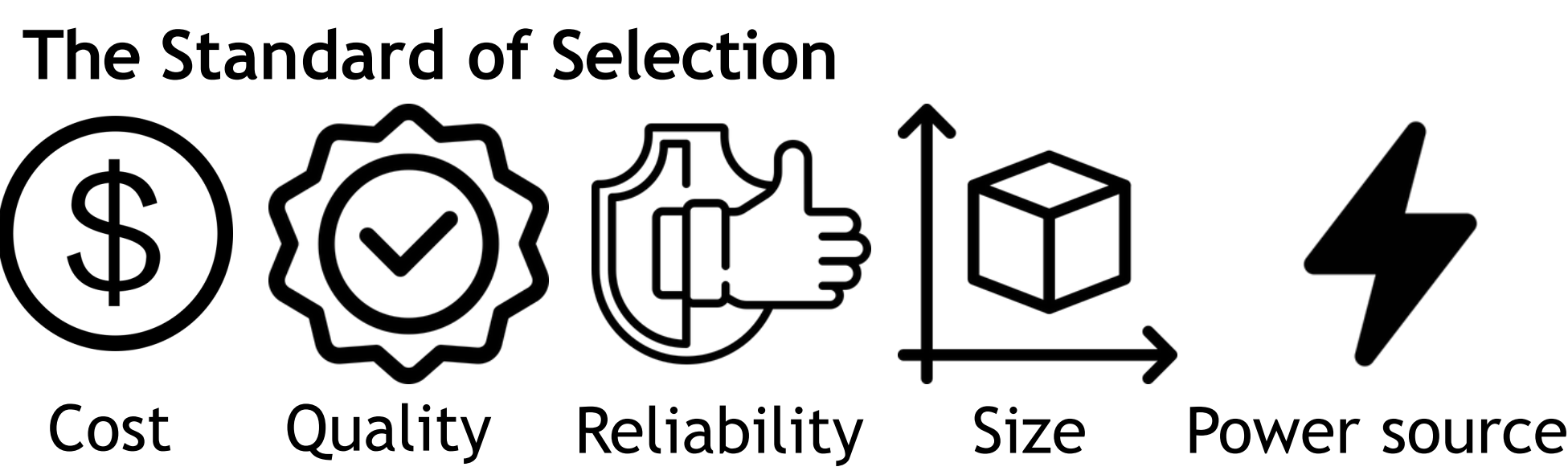
## Introduction



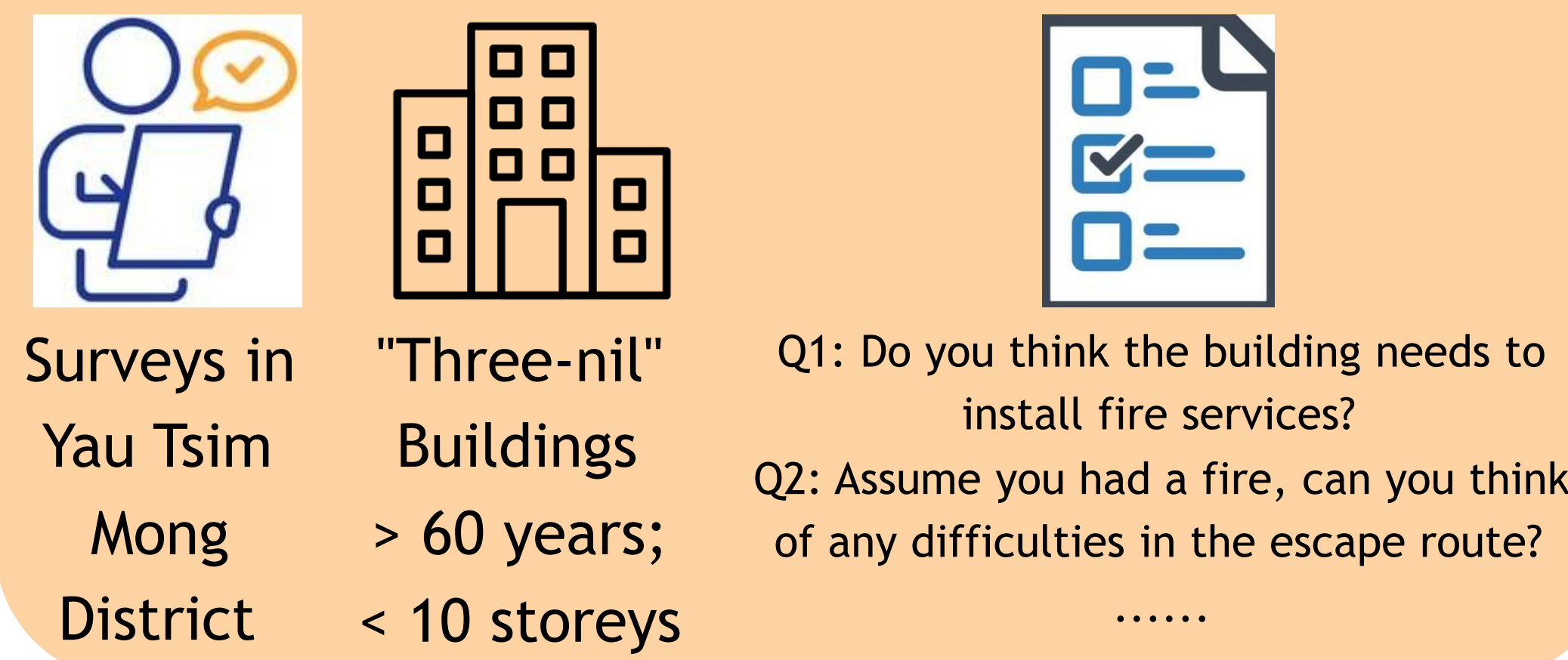
## Objectives of the study



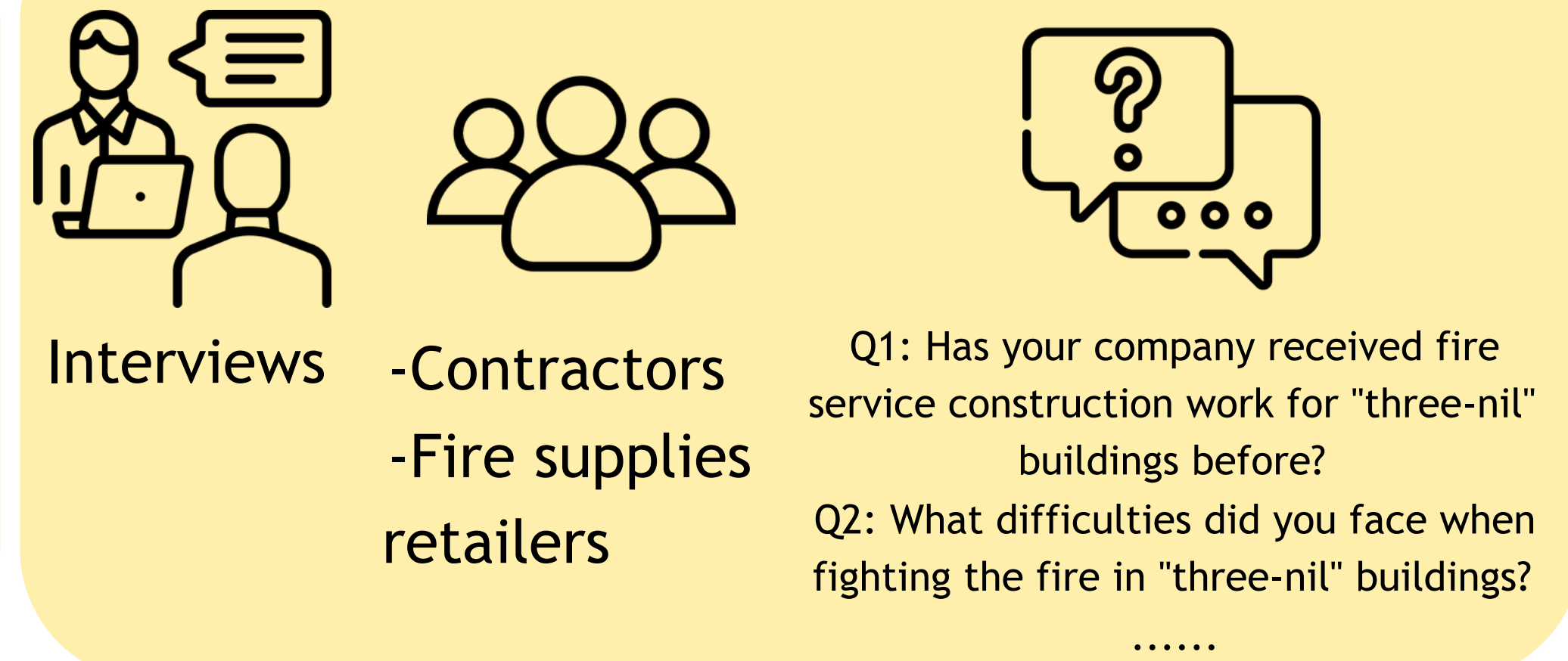
## Methodology



### Quantitative Method



### Qualitative Method



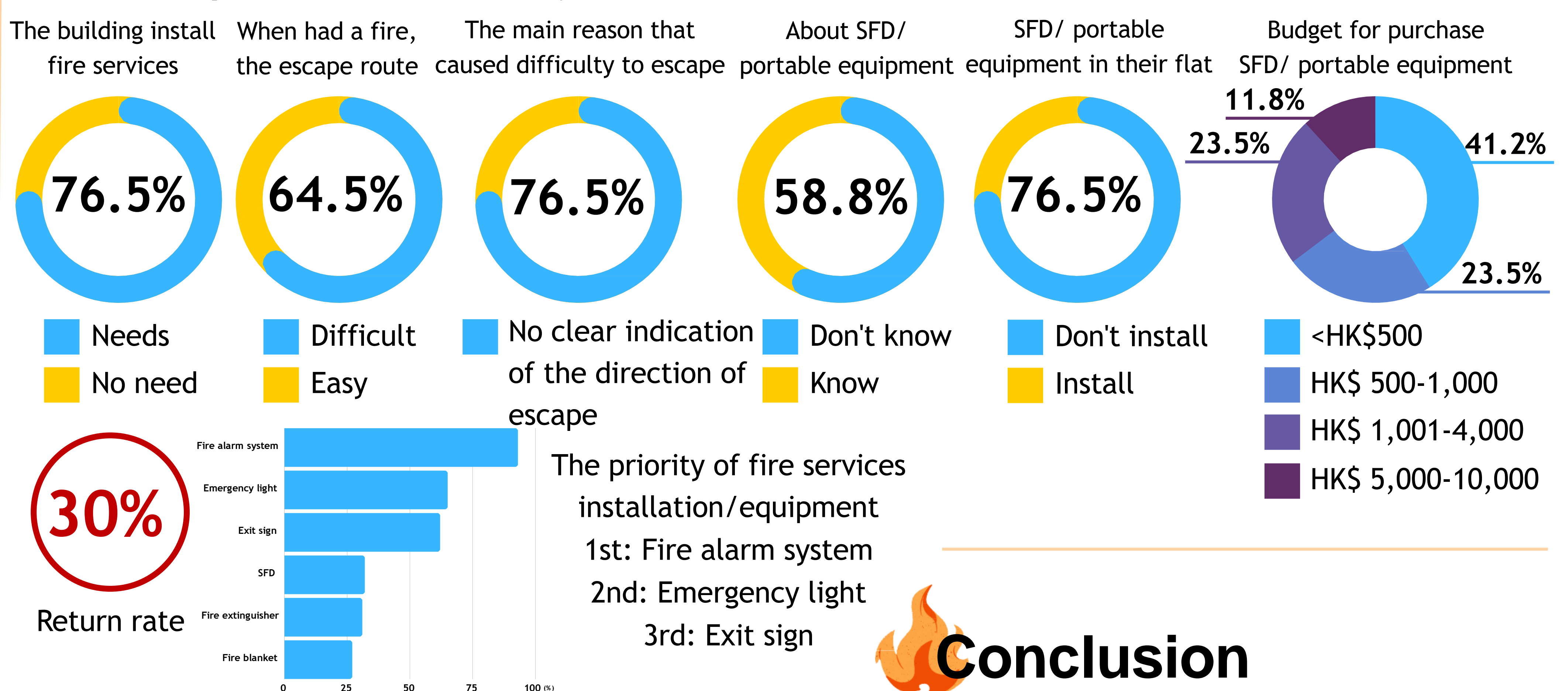
## Findings and Discussions

### Questionnaire Survey

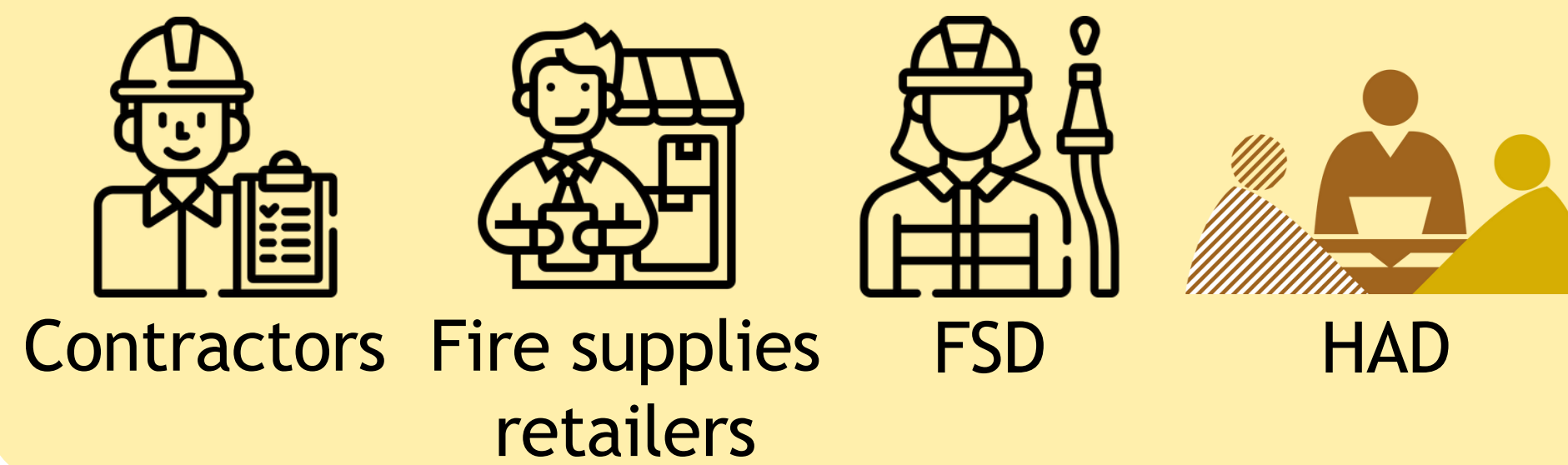
Current "three-nil" buildings conditions



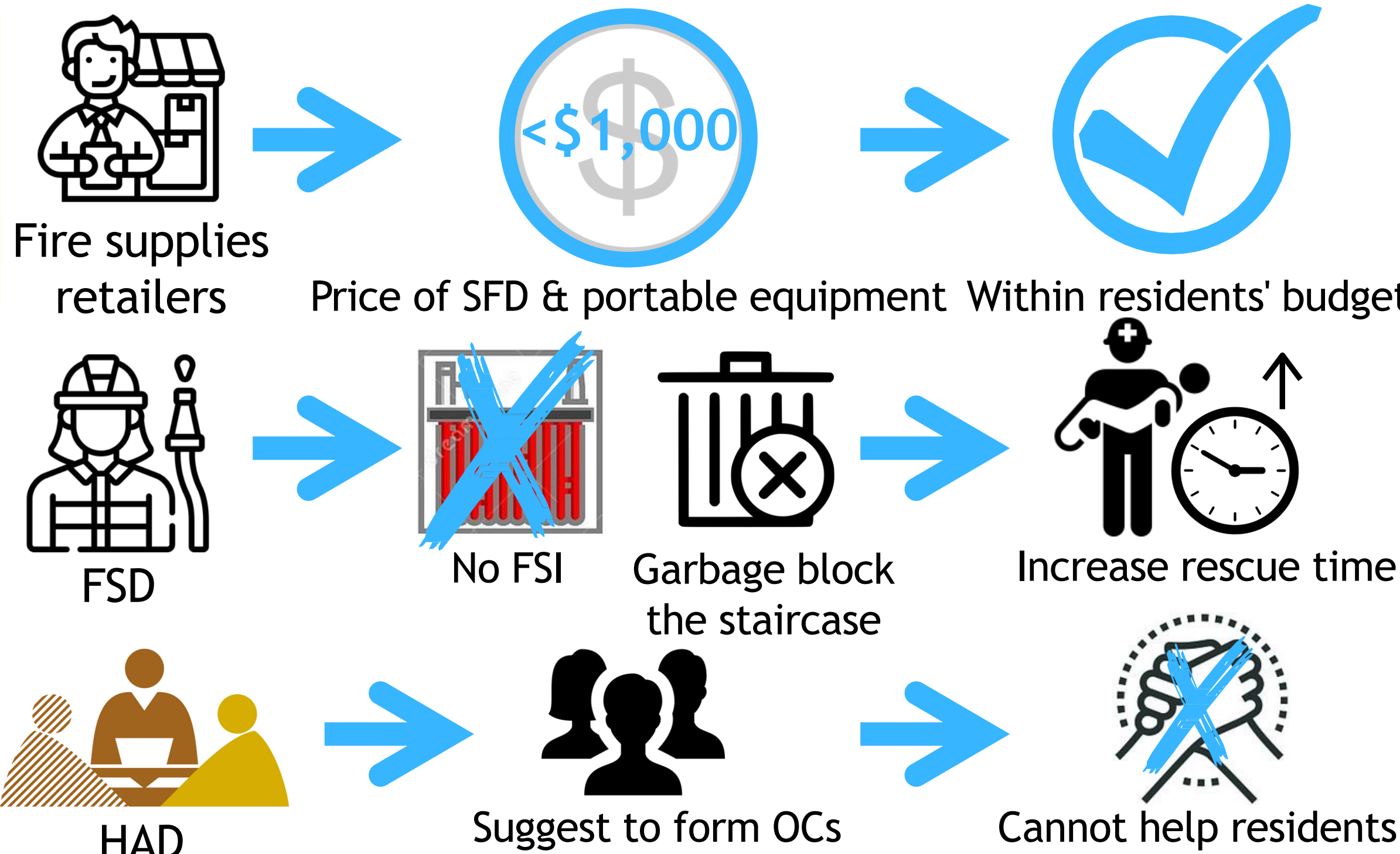
### Result of questionnaire survey



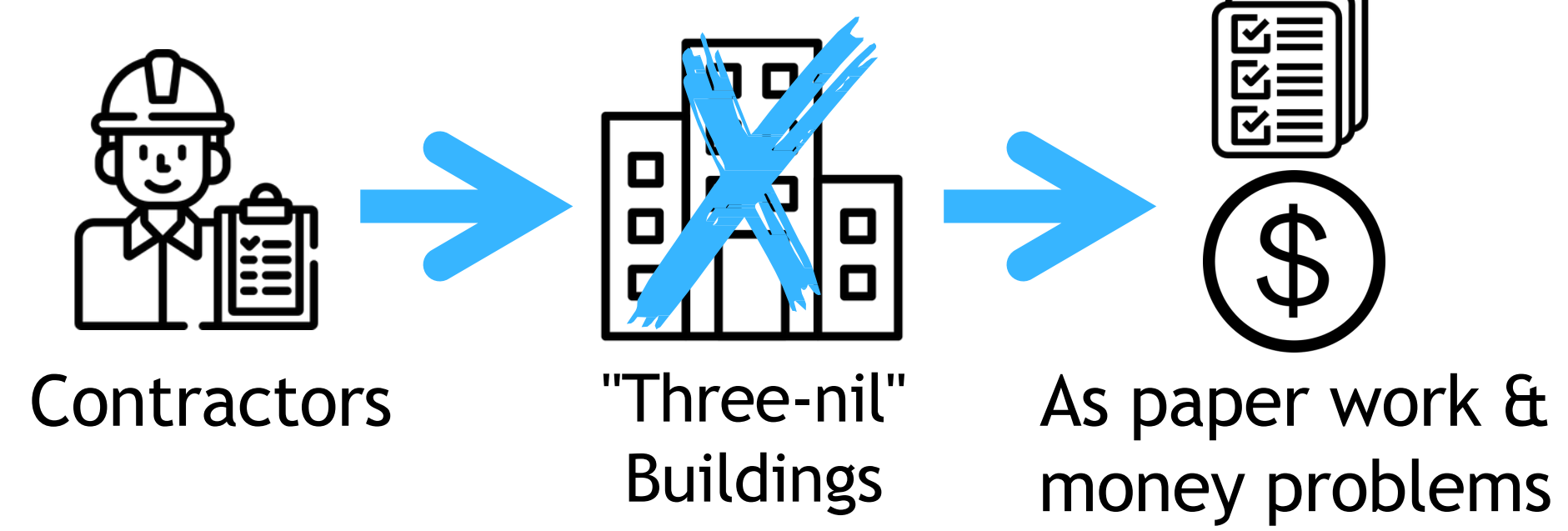
### Interview



### Result of interview



### Result of interview



## Conclusion

